



Geländesprung Gazette

"35 years and still going downhill."

www.gelandesprung.org

September 2004

Exciting Season

Whew! Summer is almost over. I thought it would never end! All those days of 60 degrees plus. Before it's gone completely though, we have one more "summer" event coming up. The Fall Golf outing with the Sly Foxes. Please join in on the fun at Brown County Golf Course by signing up soon. You don't have to be a good golfer to go. Most of us are not.

I'm going to keep this short to save room in the Newsletter so please check out the New Trip List included this month. You can renew your membership now and sign up for any or all of the local trips right away but please note that you must wait until October 6 to sign up for Steamboat or Lake Tahoe and October 8 to sign up for Winter Park.

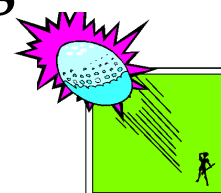
Thank you,
Tom VanderLinden

September Birthdays

- 1 Lori Anderson
- 3 Glen Maass
- 3 Lee Sannes
- 5 Paula Schultz
- 10 Dan Goudreau
- 11 Bill Wanie
- 12 Melissa Kahl
- 15 Niels Jensen
- 19 Terri Moede
- 22 Betty Jensen
- 30 Don Steffens

First Annual Gelände-Foxy Fall Classic Golf Outing

September 18, 2004



Where: Brown County Golf Course

Tee Times: Starting at 12:30 PM

Cost: \$50/Person (includes 18 holes, Dinner, Prizes)

\$10/Person (for Dinner only)

\$18/Person (Power Cart on your own)

Scramble format will be played

Make your own foursomes

Singles, twosomes, threesomes will be grouped to make foursomes

\$50 is due by **September 11**

\$10 is due by **September 11**

Gelände-Foxy Annual Fall Golf Outing
September 18, 2004

___ **\$50 GOLF AND DINNER BY SEPTEMBER 11**

___ **\$10 DINNER ONLY BY SEPTEMBER 11**

___ **CHECK HERE IF - OUT OF COUNTY RESIDENT**

MAKE CHECKS PAYABLE AND MAIL TO:

KEVIN KLASSEN

1148 S. TAYLOR ST. APT. G

GREEN BAY, WI 54304

NAME: _____

NAME: _____

NAME: _____

NAME: _____

GELANDESPRUNG SKI CLUB MEMBERSHIP FORM 2004-2005 SEASON



Please mail the completed form and dues to:

Gelandesprung Ski Club, P.O. Box 10422, Green Bay, WI 54307-0422

MEMBERSHIPS DUE BY NOVEMBER 30th, 2004

New Member(s) & Membership Renewals: **Single \$ 30.00** **Married Couple \$ 50.00**

PLEASE PRINT:

Name: _____ Male Female

Address: _____

City: _____ State: _____ Zip: _____ - _____

Phone (Home): _____ Email: _____

Birthday Month and Day: ____/____/____

Please indicate if it is "OK" to publish your **phone number** in the Ski Club Membership Roster. Yes No

Please indicate if it is "OK" to publish your **email address** in the Ski Club Membership Roster. Yes No

Would you like to receive a link to the monthly newsletter loaded on our website via email. Yes No

Please indicate if you're interested in (circle as many as you want):

Trip Leader Committee Member Board Member

New Members: How did you hear about the club/who referred you? _____

Please Read Before Signing

I certify that I am at least 21 years of age and do hereby accept the policies and practices of the Gelandesprung Ski Club. I understand that my participation in club-sponsored events carries a degree of risk of injury or death. I hereby unconditionally waive and release the Gelandesprung Ski Club, its officers, directors, agents and members from any and all liabilities arising from any injuries, property damage or loss I may suffer as a result of my actions. Further, I hereby grant full permission to any and all foregoing to use any photograph, videotape, motion pictures, recordings or other record of any ski club event for any legitimate purpose. Please see the current Trip List for Gelandesprung Ski Club Trip Policies, or view them at the web site listed below.

Signature: _____ Date Signed: _____

Gelandesprung@Hotmail.com
www.gelandesprung.org



GELANDESPRUNG SKI CLUB

GREEN BAY, WISCONSIN

"35 Years and Still Going Downhill!"

2004-2005 Trip List

www.gelandesprung.org



Marquette Mountain Day Trip (\$50)

Saturday, December 18

Trip Leader: Gary Austin

Telephone: (920) 406-9182

We start the new season with a day trip to Marquette Mountain. New members will find this trip an opportunity to travel in the comfort of a Deluxe Motor Coach Bus. The trip includes bus transportation, lift ticket, snacks & beverages on the bus and lunch on the hill! The bus will load at the Ramada Plaza Hotel, Ashwaubenon at 6:00 AM and leaves at 6:30 AM sharp! The total trip cost is \$50 and payment is due by November 19.



New Years' Trip – Lutsen, Minnesota (\$360)

Wed, December 29 - Sat, January 1

Trip Leaders: Gary Heilmann and Linette Haleen

Telephone: (920) 499-5019 and (920) 839-2870

Due to last year's successful trip we will again have the opportunity to ride Mid-America's only Gondola at Lutsen Mountain. In addition to the Gondola, Lutsen has 7 double chair lifts, a vertical rise of 986' and 85 runs; the longest being 2 miles long. On New Year's Eve *The BUZZ with Blonde Faith* will be rockin' at Papa Charlie's. Cost of this trip includes bus transportation, lodging (double occupancy) and 3 days of skiing. The bus will load at the Ramada Plaza Hotel, Ashwaubenon at 8:30 AM and depart at 9:00 AM. The total trip cost is \$360 with a deposit of \$100 due by November 3; and the \$260 balance is due by December 1. Slopeside lodging is available at an additional cost. Come join the fun on the bus and leave the driving to us!



BIG SNOW ONE w/ Sly Fox Ski Club (\$230)

Indianhead & Powderhorn Mountain

Friday, January 7 – Sunday, January 9

Trip Leaders: Charlie Mineau, Teri Linssen & Jenny Mineau

Telephone Charlie at: (920) 437-8934

Enjoy a weekend of skiing with our friends from the Sly Fox Ski Club at two popular ski resorts. The price of this trip includes bus transportation, lift tickets (1 day at Indianhead and 1 day at Powderhorn) and two nights lodging right at Indianhead Resort (double occupancy); 2 breakfasts **plus** Saturday night dinner. The bus will load at the Ramada Plaza Hotel, Ashwaubenon at 4:00 PM and then pick up the Sly Fox group at The Bar in Appleton at 5:15 PM. The total trip cost is \$230 with a deposit of \$50 due by November 12 and the \$180 balance due by December 10.



Steamboat, Colorado (\$699)

Friday, January 21 – Tuesday, January 25

Trip Leader: Doug Rutz

Telephone: (920) 991-9030

This long weekend trip provides a golden opportunity to ski. The official trip opening date is Wednesday, October 6. **DO NOT** send the \$200 deposit prior to October 6 or it will go to the end of the list! The trip includes air and bus transportation, four nights lodging in 3 bedroom condos and a 3-day lift ticket. The flight departs from Green Bay on Friday and returns on Tuesday. The trip cost is \$699. For additional information please see the Sly Fox flyer or contact Doug Rutz. (Mail payments for this trip to the Sly Fox Ski Club, PO Box 9110, Appleton, WI 54911-9110.)



Searchmont Mountains, Ontario, Canada (\$235)

Friday, February 4 – Sunday, February 6

Trip Leaders: Rick and Sue Huston

Telephone: (920) 494-1402

Our most popular bus trip takes us to the ski resort of Searchmont, Canada on the Eastern shore of Lake Superior! We will again stay at the Water Tower Inn in Sault Ste. Marie. This hotel has a heated indoor pool, sauna and indoor and outdoor whirlpools. The bus will load at the Ramada Plaza Hotel, Ashwaubenon at 4:00 PM and leaves at 4:30 PM sharp! This trip includes bus transportation, lift tickets, two nights lodging (double occupancy), two breakfast buffets and Saturday night dinner. Total trip cost is \$235. A deposit of \$50 is due by December 11 with the balance of \$185 due by January 8.

ski Granite Peak

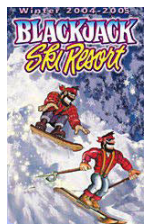
“A Night on the Slopes” Granite Peak (\$45)
Friday Afternoon/Evening, February 18
Trip Leader: Brian Fowle
Telephone: (920) 217-8282

This season the club has added a night skiing trip. The bus will load at the Ramada Plaza Hotel, Ashwaubenon at 2:30 PM and will leave promptly at 3:00 PM. The total cost is \$45, is due by January 21; and includes bus transportation, lift ticket, snacks and refreshments on the bus. Come along and try something different. It will be a great start to the weekend!



Winter Park, Colorado (\$725)
Thursday, February 24 – Monday, February 28
Trip Leaders: Dick Wortiska and Tom VanderLinden
Telephone: (920) 856-6223 and (920) 434-8648

Take a mid-winter, long weekend break and travel to the ski resort with the **most snowfall** of the Major Resorts in Colorado. Winter Park is set in the mountains of the Arapaho National Forest and boasts 21 lifts serving 134 trails spread over more than 2,700 acres across four mountains. Enjoy Ski in/Ski out, 2 bedroom condo lodging accommodations at a First Class resort. This will definitely be a popular trip. The cost of this trip includes transportation from Green Bay or Appleton to Winter Park, 4 nights lodging at the Deluxe Zephyr Mountain Lodge and a 3-day lift ticket. This trip will depart Thursday morning and arrive in Winter Park with ample time for skiers to unpack and prepare for a wonderful weekend of skiing. Cost is \$725 with a deposit of \$325 due upon sign up. **DO NOT** send the deposit prior to October 8 or it will go to the end of the list! Balance is due by December 15. See trip flyer or call one of the trip leaders for more details. (Mail payments for this trip to the Gelandesprung Ski Club, P.O. Box 10422, Green Bay, WI 54307-0422.)



BIG SNOW TWO (\$230)
Porcupine Mountains or Mt. Bohemia & Blackjack Mt.
Friday, March 4 – Sunday, March 6
Trip Leaders: TBD
Telephone:

Enjoy a second trip to the land of “Big Snow” with a panoramic view of Lake Superior at the Porcupine Mountains **or** at the steep timber-rich slopes of Mount Bohemia (**Most of the Mt. Bohemia terrain is rated for experts only. No beginners**). Then it’s on to Blackjack Ski Resort on Sunday. The bus will load at the Ramada Inn at 4:00 PM and leaves at 4:30 PM sharp. This trip includes bus transportation, two nights lodging (double occupancy) at the Americinn in Silver City, Michigan, lift tickets for the Porkies on Saturday (not Bohemia to cover the cost of extra transportation); and Blackjack on Sunday. Two breakfast buffets and a Saturday night dinner. The total trip cost is \$230 with a deposit of \$50 due by January 7 and the balance of \$180 due by February 4. (Side trip to Mt. Bohemia will depend upon # of skiers interested in going!)



Lake Tahoe, California (\$999)
Saturday, March 19 – Saturday, March 26
Trip Leader: Sam Fontaine
Telephone: 920-730-0728

Here’s the trip you’ve been waiting for! A full week in Lake Tahoe, California to end the season with a 5-day lift ticket package. The trip signup date is October 6. **DO NOT** send your deposit to reserve your spot prior to October 6 or it will go to the end of the list! This will definitely be a popular trip and space is limited. The trip includes air and bus transportation, 2-bedroom condo lodging and lift ticket. The trip cost is \$999. For additional information please see the Sly Fox flyer or contact Sam Fontaine. (Mail payments for this trip to the Sly Fox Ski Club, P.O. Box 9110, Appleton, WI 54911-9110.)

Need More Skiing?

Check out these trips with the Sly Fox Club:

Brule – December 11

Marquette – February 11-13

Searchmont – March 11-13

Club Meeting Schedule

Friday, October 8 – Fall Banquet – Ramada Plaza Hotel – 6:30 PM cocktails, 7:30 PM dinner (RSVP before Oct. 1)
Tuesday, November 2 – Open House at Zeller’s Ski & Sports, 1212 Marine St., Green Bay – 7:00 PM.

The Following Club Meetings are all at Ramada Plaza Hotel, Ashwaubenon, at 7:00 PM:

Tuesday, December 14 - - Tuesday, January 4 - - Tuesday, February 1 - - Tuesday, February 15

Tuesday, March 1 (Nominate Officers) (All Members and Non-members Are Welcome at Every Meeting!)

Your Membership Includes:

Organized, affordable and enjoyable one-day, weekend, long weekend and week-long ski trips in Wisconsin, Upper Michigan, Canada, the Rockies and Around the World!

- Opportunities to meet new friends with common interests!
- A monthly newsletter to keep you posted on Club events!
- Refreshments and snacks provided on bus rides to and from Ski Resorts!
- Get acquainted parties and other social events throughout the year!
- Access to Sly Fox Ski Club trips and events at no additional cost!

GELANDESPRUNG TRIP POLICIES

1. Gelandesprung Ski Club and Sly Fox Ski Club members will be given first priority for all trips.
2. **Deposits must be received by the due date** to reserve your spot on a trip. Non-member reservations will be accepted four weeks prior to departure date. All deposits, payments and refund requests should be mailed to:
**Gelandesprung Ski Club
PO Box 10422
Green Bay, WI 54307-0422**
3. Trips are based on double occupancy per bedroom. Single occupancy requests require special arrangements at increased costs, and depend on availability.
4. All monies paid for a trip cancelled by the Club will be refunded. Refunds for cancellation requests will be charged any costs that the Club is unable to recover. Refund requests must be submitted in writing to the Gelandesprung Ski Club Board of Directors at the above Club address. Written requests must indicate which specific future Gelandesprung event any refund is to be credited towards or a request for the Gelandesprung Treasurer to issue a refund check. Refunds will only be issued after all of the bills related to the trip have been paid. Trips utilizing airline transportation have additional separate written cancellation policies specific to each trip. **All decisions on refund amounts will be made by the Board of Directors and are final.**
5. Beer and soda is provided on all trips, therefore, a 21 year-old age restriction applies. **YOU MUST BE AT LEAST 21 YEARS OLD.**
6. All payments must be made prior to trip departure. No payments will be accepted at departure or on provided transportation.
7. Smoking is **not** allowed on buses. Reasonable efforts will be made to accommodate smokers.
8. Any additional trip surcharges incurred by the Club will be passed along to those participating on the affected trip(s).

BOARD OF DIRECTORS

Tom VanderLinden, President..... 920-434-8648
Dale Koller, Vice-President..... 920-338-1387
Brian Fowle, Treasurer 920-217-8282
Sue Huston, Secretary 920-494-1402

COMMITTEE VOLUNTEERS

Penny Holman, Newsletter Editor 920-846-8225
Phil Andreas, Trip Meister..... 920-866-3074
Bill Wanie, Beer Meister 920-826-2468
Mike Bast, Web Meister/Membership 920-469-8617
Don Steffens, Historian..... 920-434-1267
Kevin Klasen, Summer Events 920-497-8842

Gelandesprung Ski Club

www.gelandesprung.org



"35 YEARS AND STILL GOING DOWNHILL!"

Trip Sign-up / Payment Sheet 2004-05 Season

Skier's Name(s) _____ Male Female Non-Smoking Smoking

Ski Club affiliation: Gelandesprung Sly Fox Other _____

Membership Dues due by Nov. 30th <small>(Please include a completed "Membership Form")</small>	Single \$30.00	Married Couple \$ 50.00
---	-----------------------	--------------------------------

Ski Trip	Ski Dates & Payment Due Dates	Skier 1 Paid	Skier 2 Paid
----------	-------------------------------	--------------	--------------

Marquette "Day Trip"	Dec. 18 (Saturday)		
	\$ 50.00 (Due by Nov 19)		

Lutsen for "New Years"	Dec. 29 – Jan. 1 (Wed-Sat)		
Roommate Request: _____	\$360.00 (\$100 by Nov 3 / \$260 by Dec 1)		

Big Snow I (Indianhead & Powderhorn)	Jan. 7-9 (Fri-Sun)		
Roommate Request: _____	\$ 230.00 (\$ 50 by Nov 12 / \$180 by Dec 10)		

Searchmont, Canada	Feb. 4-6 (Fri-Sun)		
Roommate Request: _____	\$ 235.00 (\$ 50 by Dec 11 / \$185 by Jan 8)		

"A Night" @ Granite Peak	Feb.18 (Friday "Night")		
	\$ 45.00 (Due by Jan 21)		

Winter Park, Colorado	Feb. 24-28 (Thur-Mon)		
Roommate Request: _____	\$ 725.00 (\$ 325 at Sign-up / \$400 by Dec 15)		

Big Snow II (Porkies/Bohemia & BlkJack)	March 4-6 (Fri-Sun)		
Roommate Request: _____	\$ 230.00 (\$ 50 by Jan 7 / \$180 by Feb 4)	Going to Bohemia vs Porkies - Yes? <input type="checkbox"/>	

Please Read Before Signing

Check No.	Total \$ Enclosed:
-----------	--------------------

I certify that I am at least 21 years of age and do hereby accept the policies and practices of the Gelandesprung Ski Club. I understand that my participation in club-sponsored events carries a degree of risk of injury or death. I hereby unconditionally waive and release the Gelandesprung Ski Club, its officers, directors, agents and members from any and all liabilities arising from any injuries, property damage or loss I may suffer as a result of my actions. Further, I hereby grant full permission to any and all foregoing to use any photograph, video tape, motion pictures, recordings or other record of any ski club event for any legitimate purpose. See the current Trip List for Gelandesprung Ski Club Trip Policies, or view them at www.gelandesprung.org.

Any additional trip surcharges incurred by the Club will be passed along to those participating on the affected trip(s). Trips are based on double occupancy. Single occupancy requests require special arrangements at increased costs, and depend on availability. All monies paid for a trip cancelled by the Club will be refunded. Refunds for cancellation requests will be charged any costs that the Club is unable to recover. Refund requests must be submitted in writing to the Gelandesprung Ski Club Board of Directors at **Gelandesprung Ski Club, PO Box 10422, Green Bay, WI, 54307-0422**. Written requests must indicate which specific future Gelandesprung event any refund is to be credited towards, or a request for the Gelandesprung Treasurer to issue a refund check. Refunds will only be issued after all of the bills related to the trip have been paid. Trips utilizing airline transportation have additional separate written cancellation policies specific to each trip.

All decisions on refund amounts will be made by the Board of Directors and are final.
See the 2004-2005 Trip List for Gelandesprung Ski Club Trip Policies, or view them at www.gelandesprung.org.
By submitting this form, I agree that I have read and accept the trip policies as set forth by Gelandesprung Ski Club.

Signature: _____ **Date Signed:** _____

Signature: _____ **Date Signed:** _____

Gelandesprung and Sly Fox Ski Clubs present:

Winter Park, Colorado

Thursday, Feb. 24 to Monday, Feb 28, 2005 \$725

Open for sign-ups on October 8, 2004

This Trip Includes:

Round trip airfare via United Airlines between Green Bay or Appleton and Denver. Departs at 9:15 AM on Thursday, Jan. 24 from Green Bay and at 9:35 AM out of Appleton. The group will return to Appleton at 6:45 PM on Monday, Jan 28 and to Green Bay at 6:50 PM.

Charter Bus transfer to and from Winter Park Resort, Colorado.

Deluxe Condominium lodging at the Contemporary Ski In/Ski Out Zephyr Mountain Lodge, just 110 feet from the Zephyr Express Hi-Speed Quad Chair Lift.

All Units come with 2-bedroom / 2-bath units and full kitchens.

Price includes a 3 Day Lift Ticket for Winter Park Resort.

Fine Print: You must be a member of the *Gelandesprung Ski Club* or the *Sly Fox Ski Club* to participate.

Make payments to: Gelandesprung Ski Club, P.O. Box 10422, Green Bay, WI 54307-0422

Payment Schedule: Trip is open for sign-up on Oct 8, 2004 by mail postmarked on Oct. 8, 2004 or in person at the Gelandesprung Fall Banquet at the Ramada – Green Bay between 6:30 and 7:30 PM. Do not mail deposit before Oct. 8 or it will go to the back of the line. (Only 52 spots are available at this time.)

\$325 Deposit upon sign-up. Balance due by Dec. 15, 2004. A \$10 late charge will be assessed for payments made after these dates. Cancellations: Full Refund before Oct. 15, 2004. \$100 Cancellation fee by Dec. 15, 2004. After Dec. 15, 2004, refunds are limited to what ever we can obtain from the lodging, airlines and lift operator less the \$100 cancellation fee.

Questions? Call: Tom VanderLinden @ 920-434-8648 or email: ctvander@tds.net

Dick Wortiska @ 920-856-6223 or email: wortiska@doorpi.net

(Please cut here and fill in the information below)

Send with your deposit to: **Gelandesprung Ski Club, P.O. Box 10422, Green Bay, WI. 54307-0422**

Name(s) (As appears on your photo ID):

Address: _____

Telephone: Day _____ Night _____ Amt Encl'd _____

I have read and understood the terms, conditions, payment schedule, cancellation fees, stated above:

I am going on the Winter Park Trip! SIGNATURE _____

I am going on the Winter Park Trip! SIGNATURE _____

Preferred Departure City (if available): Green Bay: _____ Appleton: _____

Have agreed to room with: _____

Gelandesprung Ski Club

FALL BANQUET

Friday, October 8, 2004

Cocktails: 6:30 PM

Dinner: 7:30 PM

Ramada Plaza Hotel

2750 Ramada Way

Ashwaubenon

Dinner Buffet
\$17



Tossed salad with choice of dressing, pasta salad, chicken cordon bleu, London broil, roasted baby red potatoes, chef's choice of vegetable, dinner rolls with butter, coffee, tea, milk, cakes, pies and cheesecakes.

Free Beer, Wine and Soda

Cash Bar

Prizes

MUST R.S.V.P. BY October 1, 2004

Amount Enclosed \$ _____

Name _____

Name _____



MAIL TO: Gelandesprung Ski Club
P.O. Box 10422
Green Bay, WI 54307-0422

GELANDESPRUNG SKI CLUB
35 Years And Still Going Downhill

RAMADA®

PLAZA HOTEL
GREENBAY

2750 Ramada Way, Green Bay, WI 54304
Oneida Street Exit
920-499-0631

www.ramadagreenbay.com

The official club meeting, banquet, and trip departure location



10% Off

"Gelandesprung Members"

200 Mall Drive
Appleton, WI 54913
(920) 731-3652
Fax: (920) 731-9145
Toll Free: 1-800-870-3652

Web Site: www.mountainbay.com

BENEFIT DESIGN ASSOCIATES, LLC

BILL WANIE, RHU, REBC
CONSULTANT

1808 Allouez Avenue, Suite G
Green Bay, WI 54311
Tel: 920.884.1138
Toll Free: 877.884.1138
bwanie@benefitdesignassociates.com
Fax: 920.884.1191

WOUTERS LANDSCAPING INC.



JOHN WOUTERS
OWNER

YOUR SATISFACTION IS OUR FIRST PRIORITY

(920) 494-4689

1010 Spence Street
Green Bay, WI 54304

The 2004-2005 GelandeBoard & Committee Volunteers

BOARD OF DIRECTORS

Tom VanderLinden, President 920-434-8648
Dale Koller, Vice-President 920-338-1387
Brian Fowle, Treasurer 217-8282 (cell)
Sue Huston, Secretary 920-494-1402
Jeannene Jenkins, Past President 920-468-1709

Club E-mail: Gelandesprung@hotmail.com

COMMITTEE VOLUNTEERS

Penny Holman, Newsletter Editor 920-846-8225
Bill Wanie, Beer Meister 920-826-2468
Mike Bast, Web Meister, Membership 920-469-8617
Don Steffens, Historian 920-434-1267
John Wouters, Advertising Coordinator 920-496-1012
Kevin Klasen, Summer Social Director 920-497-8842
Phil Andreas, Trip Meister 920-866-3074

Zeller's Ski & Sports, Inc.



ANN ZELLER-BIELEFELDT
CHRIS ZELLER
DAVID ZELLER

1212 Marine Street
Green Bay, WI 54301
920-435-9562

www.zellersskiandsports.com



MARQUETTE MOUNTAIN SKI AREA
2003-2004

4501 M-553
Marquette, MI 49855

1-800-944-7669

www.marquettemountain.com

ESTABLISHED 1897



Tom Jolly
(920) 468-5595



This newsletter is also available via an internet link to your E-mail. To switch to E-mail delivery, E-mail gelandesprung@hotmail.com, have "eNews sign-up" as the subject and your name and E-mail address in the body.



Gelandesprung Ski Club
P.O. Box 10422
Green Bay, WI 54307-0422
www.gelandesprung.org

TRIPS FOR 2004-2005 SEASON

Marquette Day Trip	.Dec. 18
Lutsen	.Dec. 29 - Jan. 1
Big Snow 1	.Jan. 7-9
Steamboat	.Jan. 21-25
Searchmont	.Feb 4-6
Granite Peak Friday Evening	.Feb. 18
Winter Park	.Feb. 24-28
Big Snow 2	.March 4-6
Lake Tahoe	.March 19-26